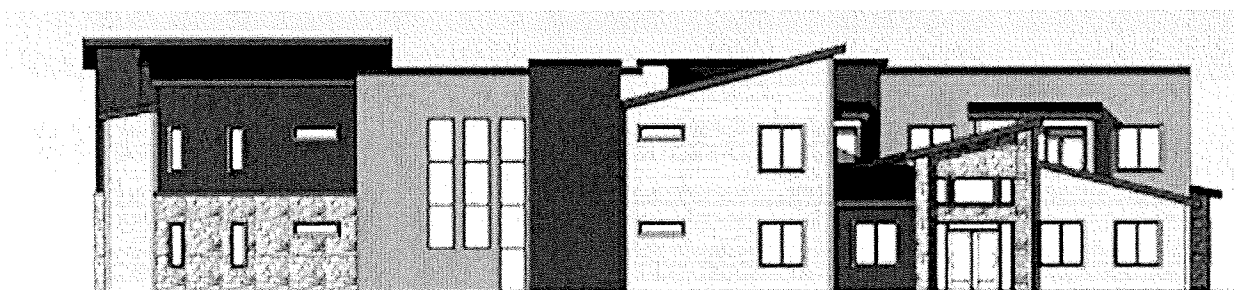


# Sutro Street Senior Apartments



## Proposed Project of the Reno Housing Authority

Sutro and Hillboro (Friendship Lane)

- 44 apartments in two-story elevator structure
- One- and two-bedroom handicapped accessible and adaptable units
- Designed to support senior citizens in independent living
- One out of four apartments with rental assistance dedicated to seniors transitioning from motels and shelter
- Target residents will earn 40% or less of area median income
- Modern, two-story apartment building, with ample of community and service spaces
- Close proximity to Washoe County Senior Center and RTC bus stop
- Near hospitals and medical clinics
- Designed to complement and stabilize the Sutro area neighborhood

## Senior Support

The Reno Housing Authority is a pioneer in the provision of elder care services in its developments. At Sutro Street, we will provide support to help residents maintain financial and physical independence through on-site and off-site programs. Numerous partner agencies will provide consultations, workshops and services:

- Aging and Disability Resource Center
- Advocate for Elders for the State of Nevada
- Food Bank of Northern Nevada
- Care Chest of Sierra Nevada
- Nevada Division of Welfare and Supportive Services
- Department of Veterans Affairs (VA)
- Washoe County Senior Services
- Local Non-profit organizations

## About the Reno Housing Authority:

The Reno Housing Authority helps more than 3,000 low income households through Public Housing and the Housing Choice Voucher program. We offer housing to the elderly and disabled, veterans, and at-risk populations while striving to help families achieve self-sufficiency. Supplying affordable housing to residents of Reno, Sparks and Washoe County since 1943, we currently own and maintain 165 scattered site properties and 339 affordable non-standardized units.

## For more information:

Call Brent Boynton at the Housing Authority at 432-6579 or email [BBoynton@RenoHA.org](mailto:BBoynton@RenoHA.org).